

# iPassLeader

Pass Your Next Certification Exam Fast!

Everything you need to prepare, learn & pass your certification exam easily.

Login / Register

Shopping Cart (3)

Search...



### Online Test Engine

Instant Online Access, Test History and Performance Review, Supports Windows / Mac / Android / iOS, etc. →

### Desktop Test Engine

Installable Software Application, Simulates Real Exam Environment, Supports MS Operating System, Practice Offline Anytime. →

### PDF Format

Printable PDF Format, Prepared by IT Experts, Study Anywhere, Anytime, Free PDF Demo Available. →

Download a free pdf sample of any of our study materials

- ▶ 24/7 customer support, Secure shopping site
- ▶ Free One year updates to match real exam scenarios
- ▶ If you failed your exam after buying our products we will refund the full amount back to you.

Select a vendor... ▼

Select an test... ▼

Your email address

Free Download Demo



**48923+**  
Happy Clients



**48923+**  
Shares



**97846+**  
Downloads



**9999+**  
Years in Business

<http://www.ipassleader.com/>

Everything you need to prepare, learn & pass your certification exam easily.

**Exam** : **143-130**

**Title** : Brocade Certified Architect for  
FICON 2013

**Vendor** : Brocade

**Version** : DEMO

NO.1 The use of FICON CUP on a Brocade Director allows the z/OS System Automation to perform which two functions? (Choose two.)

- A. to prohibit communication between pairs of switch port devices
- B. to view datasets on attached storage
- C. to configure the zoning database to accommodate Path Groups
- D. to set the switch offline

**Answer:** AD

NO.2 Your customer would like to capture the performance of ports used for FICON backups during a four-hour interval each Saturday morning.

Which two tools will capture this data for review? (Choose two.)

- A. Brocade Network Advisor
- B. SAN Health
- C. Web Tools
- D. NET Health

**Answer:** AB

NO.3 A customer replaces an M6140 FICON Director with a new Brocade DCX Director. The M6140 was cascaded to an existing DCX that is in interopmode 2. Now the new DCX is cascaded to the old DCX.

Attempts to upgrade the firmware in the new DCX from v6.4.2a to v7.0.0c fail.

What is the reason for the firmware upgrade failure?

- A. Interopmode 0 should have been set on the old DCX prior to the firmware upgrade.
- B. Interopmode 3 should have been set on the old DCX prior to the firmware upgrade.
- C. Interopmode 0 should have been set on each of the DCXs prior to the firmware upgrade.
- D. Interopmode 3 should have been set on each of the DCXs prior to the firmware upgrade.

**Answer:** C

NO.4 A customer wants to use Top Talkers to determine the SID-DID flow rates within a fabric.

Which two statements are true? (Choose two.)

- A. The Top Talkers FM and EE monitors can run concurrently on the same fabric.
- B. Using Top Talkers requires the APM license.
- C. Top Talkers monitors minimum and maximum flow rates.
- D. Top Talkers can be managed using the CLI interface.

**Answer:** BD

NO.5 You are using IBM Geographically Dispersed Parallel Sysplex (GDPS) for your business continuity solution. You use Brocade DCX 8510 FICON Directors for your FICON SAN, and Brocade FX8-24 Brocade Advanced FICON Accelerator for FCIP extension for zGM replication traffic. You are considering

replacing the IP routers currently connected to the FX8-24s with Brocade MLX Series routers.

What are two benefits of deploying the MLX Series routers? (Choose two.)

- A. The MLX Series routers can also be used for IP-based replication of mainframe virtual tape.
- B. The MLX Series routers eliminate the need for the Advanced FICON Accelerator license.
- C. The MLX Series routers automatically emulate zGM replication traffic.
- D. The MLX Series routers, DCX 8510, and FCIP can be managed with Brocade Network Advisor.

**Answer:** AD

NO.6 A customer purchased the Brocade FICON Advanced Accelerator license and enabled it on their Brocade 7800 4/2.

Which three FICON extension features are enabled? (Choose three.)

- A. FICON read/write tape pipelining
- B. FICON Teradata acceleration
- C. FICON Dynamic Channel Management
- D. FICON emulation for zOS Global Mirror (zGM or XRC)
- E. FICON emulation for Metro Mirror (PPRC)

**Answer:** ABD

NO.7 A customer has channels and control units directly attached to a pair of Brocade 7800s. The firmware was

recently upgraded to Fabric OS v7.1.0. There are two separate environments using the 7800s.

Which two features would be used to isolate the two environments but still share the IP network? (Choose

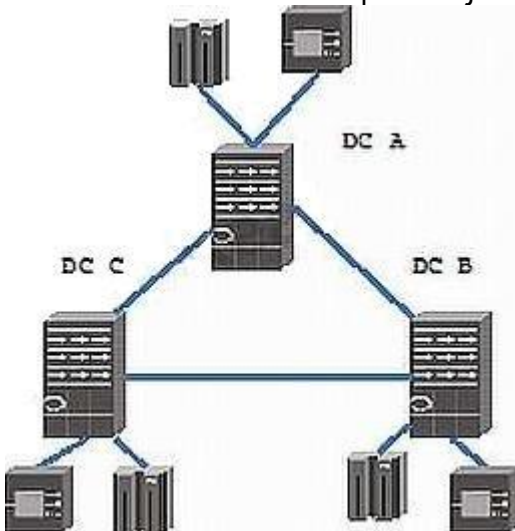
two.)

- A. Use two circuits to share one tunnel.
- B. Use XGE ports.
- C. Use XISLs.
- D. Use Virtual Fabrics.

**Answer:** AD

NO.8 There are three data centers shown in the exhibit. Two data centers need to be online at all times and

each data center can backup the adjacent data center.



Which two elements must be implemented? (Choose two.)

- A. smart optics
- B. TI Zones
- C. high integrity fabric
- D. PDCM

**Answer:** BC

NO.9 You recently upgraded your mainframes to IBM System zEC12 and are implementing zHPF. Which statement is true?

- A. zHPF is intended for improving the performance of large block data transfers.
- B. zHPF uses command mode and TCWs for channel programs.
- C. zHPF uses transport mode and TCWs for channel programs.
- D. FCP supports zHPF.

**Answer:** C

NO.10 According to Brocade best practices, what should be considered when configuring switches for FICON

when using Virtual Fabrics?

- A. Use 10-bit addressing.
- B. Use port-based addressing.
- C. Disable Virtual Fabrics and do not mix open systems and FICON traffic on the same switch.
- D. Use zero-based addressing.

**Answer:** D